

Meeting Rooms

The Novi Public Library has six different Meeting Rooms available for rent. For information and reservations, please contact the Library Administration at (248) 869-7204, Monday – Friday, 10:00am-5:00pm.

Room	Capacity	Resident Fee/Hr	Non-Resident Fee/Hr
Full Mtg Room	200	\$50	\$80
West Mtg Room	120	\$30	\$50
East Mtg Room	80	\$30	\$50
Yth Activity Room	36	\$20	\$40
Board Room	20	\$20	\$40
2nd Fl Mtg Room	10	\$20	\$40

Library Space can also be rented outside of Library business hours with advanced reservations

Room	Capacity	Resident Fee/Hr	Non-Resident Fee/Hr
Full Mtg Room	200	\$75	\$120
West Mtg Room	120	\$45	\$75
East Mtg Room	80	\$45	\$75
Outdoor Patio		\$100	\$150

Keep in Contact with Us...

Website

www.novillibrary.org is the one stop for all current library information. The website also allows library card holders to renew and hold books; review and register for programs; and access an extensive selection of library database tools.

E-newsletter

Get the latest library news and program information by e-mail every month. Go to the Library website to sign-up.

Engage!

Find library programming information and more in the **gold** section of Novi's own magazine. Engage is sent to all Novi Residents three times each year.

Instant Messaging (IM)

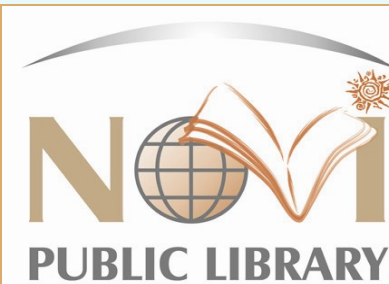
IM your reference questions right to a Novi Librarian using the Ask-A-Librarian feature from the Library website during regular business hours.

Local Access Television

View Library Board meetings, as well as the Novi Library's own television show, *Beyond Books*, on channel 13 on Brighthouse and channel 99 on AT&T.



Welcome

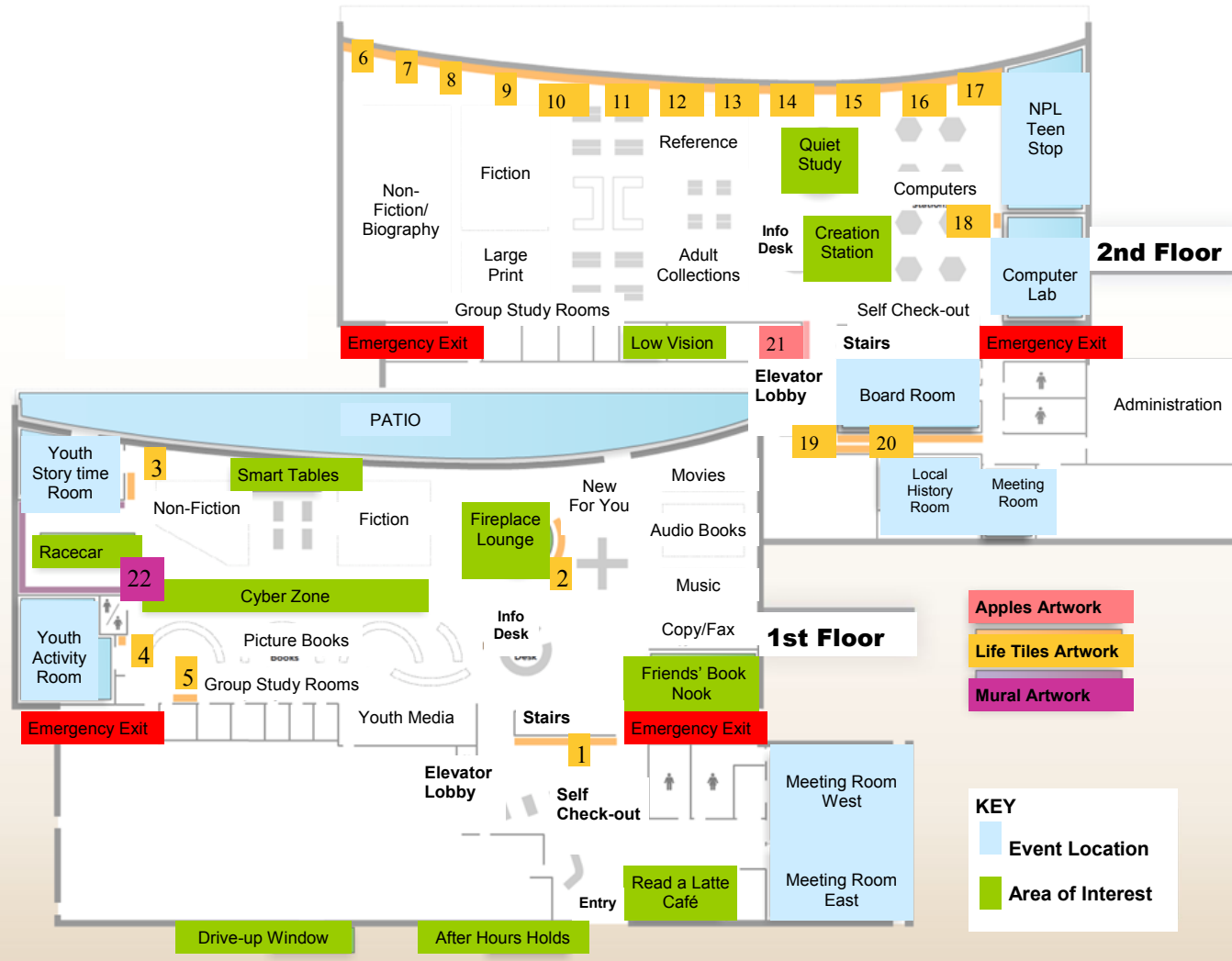


"The Librarian" created by Jim Havens

**45255 W. Ten Mile Road
Novi, Michigan 48375
(248) 349-0720
www.novillibrary.org**

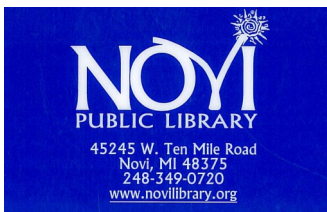
**Monday–Thursday: 10am-9pm
Friday-Saturday: 10am-5pm
Sunday: 1pm-5pm*
*Closed Sundays During Summer
(Memorial Day–Labor Day)**

Novi Public Library...Yours to Discover!



What We Offer & New to YOU!

- | | |
|---------------------------|-----------------------------------|
| After Hours Holds* | Low Vision Equipment |
| Adult Programming | Magazines/Newspapers |
| Audio Books/CDs/Playaways | Meeting Rooms |
| Bestsellers | Museum Adventure Passes* |
| Biographies | Non-Fiction Collection |
| Book Club Kits | NPL Teen Stop |
| Computers/Lab* | Outdoor Patio |
| Creation Station* | Parenting Collection |
| Drive-Up Returns | Photocopy/Fax Center |
| Drive-Up Window* | Picture Books |
| DVD/Blu-ray Movies | Quiet Study Room |
| Easy Readers | Read a Latte Café * |
| Fiction Collection | Reference Collection |
| Fireplace Reading Room | Research Databases* |
| Friends' Book Nook | Self Checkout Stations* |
| Graphic Novels | Self-Service Holds* |
| Homebound Delivery | Senior Programming |
| Homework Help* | Summer Reading Programs |
| Information Assistance | Tutor/Study Rooms |
| International Collection | Unique Artwork from Local Artists |
| Internet Access* | Video Gaming Collection |
| Large Print Books | Wi-Fi Access* |
| Literacy Collection | Youth Smart Tables |
| Local History Room | Youth Story time Room |



The Importance of Your Library Card!

Your Library Card opens up a new world of resources, services, and programs! Using your card allows the Library to serve you faster and more efficiently and provides you greater accessibility to computer and convenient services. The services marked with an * require a Library Card. Save time by signing-up for your Library Card today!